

## COMMISSAIRE'S COMMUNIQUE

### 1. Equipment:

As per UCI Regulation 16.14.001, all bicycles used in the competition must be in conformity with UCI regulations. A helpful reference can be found in the "Clarification Guide of the UCI Technical Regulations" document on the UCI website.

A pre check of bikes will be offered before the start. Please review the communiqué concerned.

For ITT: Riders must present their bike for the race check at least 15 minutes prior to their official start.

Reminder: The start will be refused if the bicycle or the equipment is not in conformity with the regulations.

In all cases the riders must take the start in the uniform as approved at the licence control.

### 2. Helmets colours for the road races:

Article 16.10.002 indicates the required colours for each class. Riders using the wrong helmet colour in the mass start races will not be allowed to start and/or will be withdrawn from the race and disqualified.

### 3. Numbers and Transponders:

Transponders will be supplied and must be fitted for ITT, road races and Team Relay.

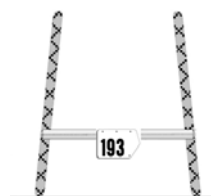
Numbers must be displayed as prominently as possible.

Transponders need to be returned after all their National Team athletes have finished their races.

Time Trial B/T/C-Classes: Only one number is required, in the lower back, on the right side. Frame numbers are not required.

MB/WB pilot: Only one black number is required for Time Trial.

Road Race: Two body numbers are required, attached to the top layer of the jersey, number pockets are not to be used. The frame number is also required.



For the handbikes: one bib number is required on the **RIGHT** leg (ITT, RR & TR), two frame stickers should be attached one each side of the handbike and one frame number on the safety bar as on the picture from regulation article 16.17.016

### 4. Call up order for the road races:

According to UCI Rules, riders will be called up before the start of each event.

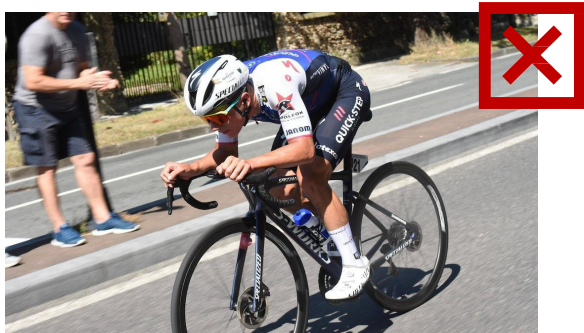
All riders must present themselves to designated assembly area in the pitlane no later than 10 minutes before their start time for the call up and form the "fish bone" formation. Riders are reminded to sign on prior to call up.

### 5. Drafting:

Drafting in road race is only permitted amongst riders of the same race number colour. Any rider taking pace or drafting from a rider of a different group will be disqualified.

### 6. Safe position on the bike (C,B,T)

Riders must observe the standard position as defined by article 1.3.008. Sitting on the bicycle's top tube is prohibited. Furthermore, using the forearms as a point of support on the handlebar is prohibited except in time trials.



## 7. Brake hood body inclination

The centre plane of the Brake Hood Body must align with the centre plane of the Traditional Handlebars (Drop area). In order to ensure that the braking system may be operated both safely and as designed (or intended), by pulling on the levers with the hands on the lever supports, a maximum inclination of 10 degrees is permitted between the two planes (see Clarification Guide document).

## 8. Handbike Disk Wheels.

As per 16.17.008, rear disk wheels are permitted for all competitions. However, for categories H1 to H4, rear disk wheels must be no more than ETRTO 406mm in size to ensure riders visibility. Front disk wheels are only permitted in Time Trials.

## 9. Feeding:

Feeding is permitted only in the designated areas.

Feeding is authorized from both sides of the road. Feeding is not permitted during the time trial and team relay events and not in the first and the last lap of the road races. Returning bottles from the riders is only allowed in the feeding zone. (2.2.025). This rule is also applied in the Team Relay.

## 10. Ranking of Road Races and Team Relay

Any riders overtaken by the leader of their wave shall continue competing. When the wave leader finishes his last lap, all other riders with the same number colour shall end their race when they next cross the finish line as per article 16.7.007

**For Team Relay** - When a rider from a nation is lapped by the leader of the race, the nation can continue to race and it will be ranked on the base of the number of laps completed at the finish of the race – Art. 16.7.016.

**11. Ceremonies**

Athletes must present themselves in race clothing, including either race shoes or trainers (no sandals or flip flops). The wearing of headbands, sunglasses and caps is not allowed at the podium ceremonies.

**12. Handbike and Tricycle Safety Bar Breakage**

If a Tricycle or Handbike athlete suffers a breakage of the safety bar, then the athlete can continue until the main feed/technical zone to have the safety bar fixed or reattached. However, if the breakage occurs on the last lap, then the athlete needs to stop and will be deemed to be DNF.

**The College of Commissaires**